



BE INVOLVED

SOCIAL NETWORKING ADVOCACY PHILANTHROPY
ENRICHMENT EXPERTISE CAREERS HERITAGE



BE INVOLVED

SOCIAL

NETWORKING

ADVOCACY

PHILANTHROPY

ENRICHMENT

EXPERTISE

CAREERS

HERITAGE

 THE
BRADFIELD SOCIETY

Bradfield is a place that many people hold dear for many varied reasons. We are here to enable you to remain in touch with Bradfield and Bradfieldians and to allow us all to make the most of the opportunities presented by gathering such diverse and talented people together in one community.

Whilst there is one Bradfield, there are many Bradfieldians and we want all Bradfieldians to be involved and remain connected. This booklet aims to showcase what that involvement could look like.

If you like what you see, let us know how you would like to be involved by completing the form at the end of the booklet, either directly, or online. The team and I are here to enable you to be involved so please don't hesitate to get in contact with us.

A handwritten signature in white ink on a dark blue background. The signature reads "Alastair Katie Karen / Michelle Sam". The names are written in a cursive, flowing style, with a slash separating "Karen" from "Michelle".

Al, Katie, Karen, Michelle and Sam

The Bradfield Society and Development Team



Featuring articles from the latest edition of our termly magazine



© MIKE HARRISON





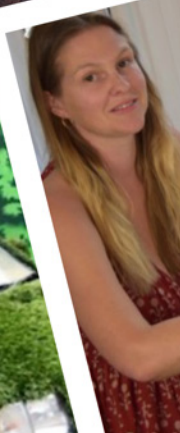
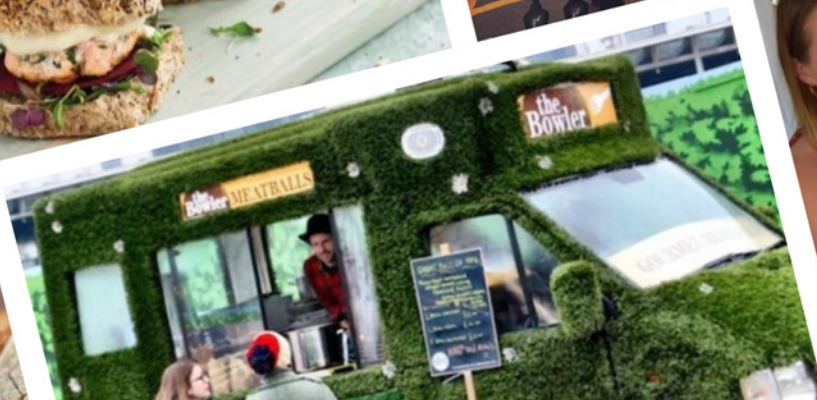
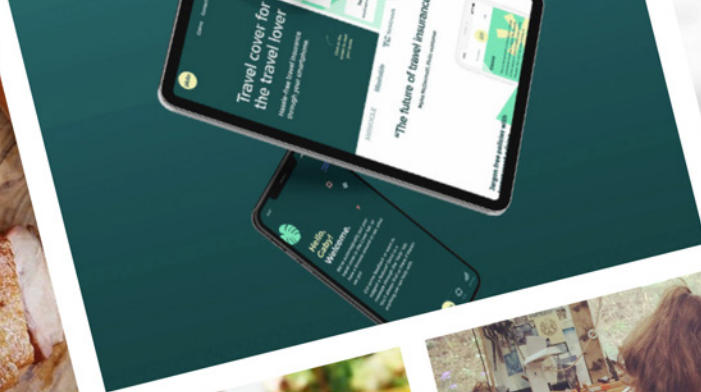
THERE'S SOMETHING VERY SPECIAL ABOUT COMING BACK TO BRADFIELD. THERE IS A REAL ENERGY ABOUT THE PLACE THAT IS SHARED BY PUPILS, PARENTS AND US AS ALUMNI, IT'S GREAT TO BE PART OF A COMMUNITY LIKE THIS.

SHELVIN GUMBS (G 07-09)

MEET WITH FRIENDS

Choose from a busy programme of events including concerts, plays, sports and speaker events. Reconnect and reminisce while re-acquainting yourself with the College through regional, international and virtual gatherings. Return to the College for an official reunion or join one of our alumni clubs or industry networks.

SOCIAL



2000

MEMBERS ON THE BRADFIELD
SOCIETY ONLINE NETWORK

MAKE USEFUL CONNECTIONS

Tap into the online Bradfieldian network to connect at all levels and across all sectors. Leverage great opportunities to share experiences, advice and knowledge while promoting your own business through our own directory.

NETWORKING





BRADFIELD HASN'T JUST TAUGHT ME HOW TO
MAKE A LIVING, IT'S TAUGHT ME TO MAKE A
DIFFERENCE.

FORMER BURSARY RECIPIENT QUOTED IN TATLER SCHOOLS GUIDE 2022

SHARE YOUR THOUGHTS

Bradfield has always relied on our community to strengthen us through word of mouth and honest feedback. Be an advocate for Bradfield by encouraging others to become part of our diverse and vibrant community and let us know where we can improve.

ADVOCACY

ST ANDREW'S PROJECT

Reuniting the College with its roots



The image is a collage. The top half shows a historic stone building, likely a church or school, with a large, ornate circular window and a crenellated tower in the background. The bottom half shows a group of four students in the foreground, smiling and posing with peace signs. They are covered in bright pink, yellow, and blue paint. In the background of the bottom half, more students in similar paint-covered clothing are walking along a path.

BRIGHT FUTURES



A LOT OF PEOPLE HAVE BENEFITTED
ENORMOUSLY FROM A BRADFIELD EDUCATION,
MYSELF INCLUDED, AND I WANT TO HELP
OTHERS TO MAKE THAT SAME JOURNEY.

MICHAEL BOSTELMANN (A 61-66)

MAKE A GIFT

The College enjoys its current strength thanks to the generosity of previous generations of Bradfieldians. Help secure the future for Bradfield and Bradfieldians by supporting our bursary or campus development campaigns.

PHILANTHROPY



20 MINERVA SPEAKER EVENTS DURING THE ACADEMIC YEAR

INSPIRE OTHERS

Inspire pupils with your knowledge as part of our speaker programme. Employ your experience to demonstrate just how far an Education for Life can take you.

ENRICHMENT





IT HAS BEEN SO EXCITING TO SEE HOW BRADFIELD
HAS PROGRESSED DURING MY TIME ON THE
ADVISORY COMMITTEE AND I LOOK FORWARD TO
HELPING TO SHAPE THAT FURTHER.


MICKY DENEHY (E 73-78)

IMPART YOUR KNOWLEDGE

Help run our alumni clubs or contribute to our wider charitable partnerships by giving your time and expertise. Join one of our advisory committees to help strengthen the community and ensure Bradfield is the best it can be.

EXPERTISE





I REALLY ENJOYED MEETING THE FOUR IMPRESSIVE YOUNG PEOPLE THAT I HAD THE PRIVILEGE TO WORK WITH. IT WAS INTERESTING TO SEE HOW DIVERSE ALL FOUR OF THE YOUNG PEOPLE WERE AND YET HOW FOCUSED AND AMBITIOUS THEY ALL ARE IN THEIR OWN WAY.

CURRENT PARENT

SHARE YOUR EXPERIENCES

Support our Horizons team as they help current pupils and recent leavers prepare for the world of work. Provide career insights at a networking event, offer work experience opportunities or build their key skills with interview practice and CV writing workshops.

CAREERS

the race went to Hildre, with Mr. Stewart Cup.

the other was Graham. I was looking back and forth between the two and I took it all in a good spirit. I was looking back and forth between the two and I took it all in a good spirit. I was looking back and forth between the two and I took it all in a good spirit.

April Fools Day + 1

Salmon
KLM

M. W. Salmon.
Mr. Wm. Ames.
Stanton
Middletown
104

408
St. Mary's
St. Mary's



WITH ITS CONSTANT, PACEY CHANGE AND
TRADITION OF ENDURING INNOVATIONS,
BRADFIELD IS A SCHOOL THAT THROUGHOUT
ITS HISTORY HAS NEVER STOOD STILL.

STUART WILLIAMS, COLLEGE HISTORIAN

JOURNEY INTO OUR HISTORY

Your memories are part of our story. Take time to browse the Bradfield archive materials online and share your recollections with us. Add your own artifacts to the collection or view a range of College and alumni merchandise which is available from our shop.

HERITAGE



How would you like to BE INVOLVED?



Bradfield College
Bradfield, Berkshire
RG7 6AU

Tel: 0118 964 4840
Email: bradfieldsociety@bradfieldcollege.org.uk
Web: www.bradfieldcollege.org.uk/bradfield-for-life/be-involved



Printed on Carbon Dioxide paper

BE INVOLVED FORM

Please complete the form in ink and **BLOCK CAPITALS** and send to: **Freeport RTKU-AEUC-RJEZ, The Bradfield Foundation, Bradfield, Berkshire, RG7 6AU.**

Alternatively, more details about how you can be involved are online, visit:

www.bradfieldcollege.org.uk/bradfield-for-life/be-involved/



CONTACT DETAILS

Name

Address

EmailTelephone Number

BE INVOLVED

I am interested in the following areas and would like to know more:

☐ Social

☐ Networking

☐ Advocacy

☐ Philanthropy

☐ Enrichment

☐ Expertise

☐ Careers

☐ Heritage

Thank you so much for being involved

Al MacEwen

Director of The Bradfield Society & Development

