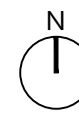


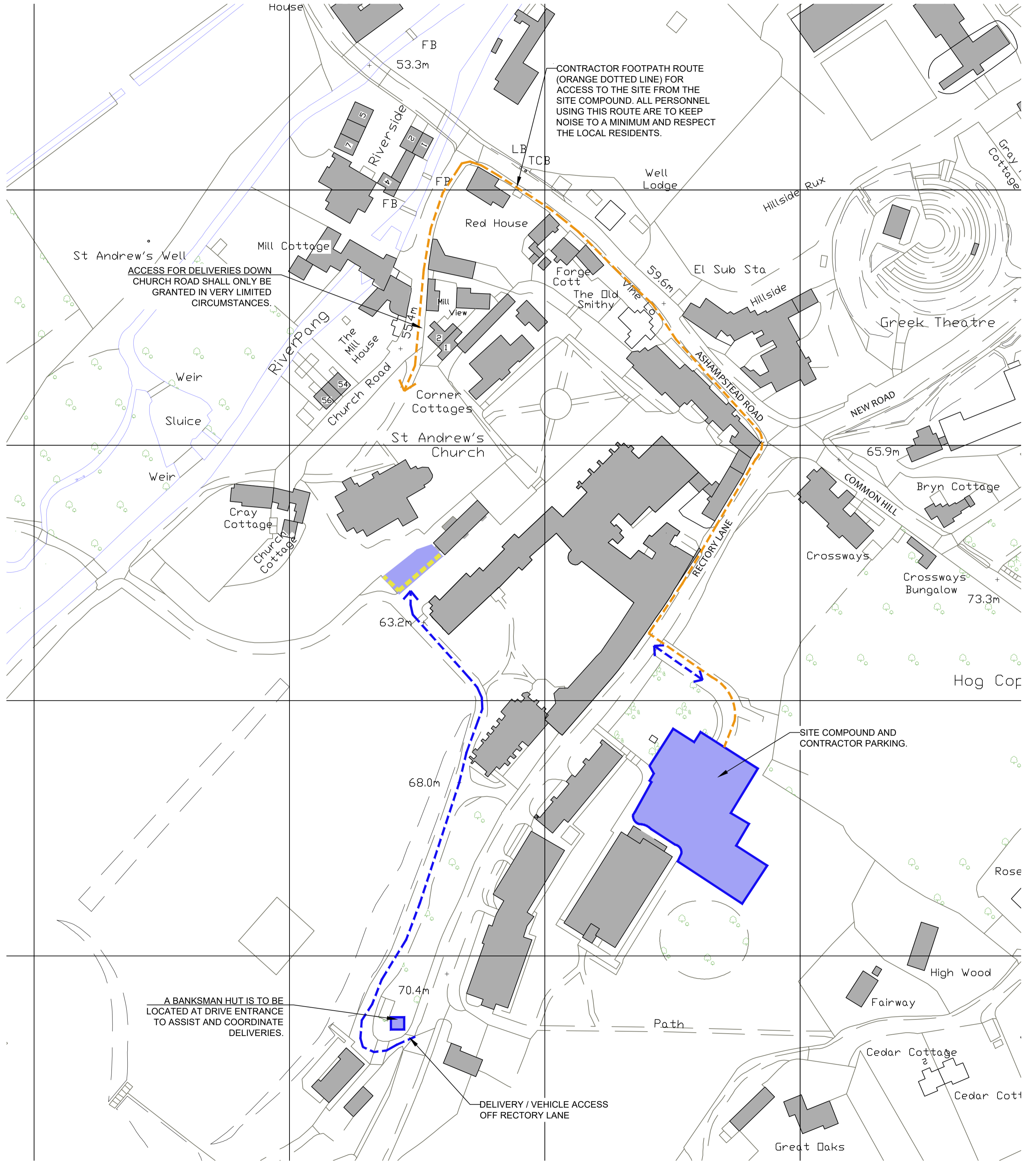
KEY:

- Vehicle Access
- Contractor Access to site via foot
- Moveable hoarding

Plan showing contractor compound and access routes



COPYRIGHT: This drawing is copyright and may not be altered, reproduced or used other than for the Contract Works for which it is issued without the written permission of Squires and Brown Ltd.
 WARNING: Do not scale this drawing. Verify all dimensions and structural details on site prior to commencement of manufacture. If in doubt, ask before proceeding. All steelwork shown is indicative - including sizes, setting-out and levels. The contractor should refer to the Structural Engineer's drawings for all setting-out information.



Rev	Description	Drawn	Date
3	CONSTRUCTION ISSUE. Compound location amended to science centre car park.	SR	03.03.22
2	CONSTRUCTION ISSUE.	SR	28/02/22
1	TENDER ISSUE. HOARDING AND BANKSMAN HUT ADDED AND NOTES AMENDED.	KL	23.09.21
1	TENDER ISSUE.	KL	26.05.21