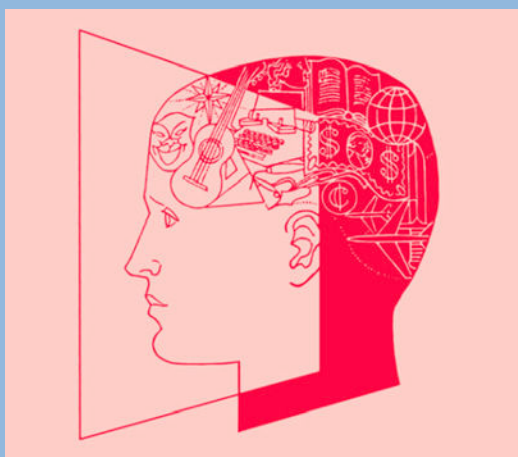




MINERVA PROGRAMME

LENT 2024

THUR 18 JAN | Psychology



THE ILLUSION OF REALITY: HOW OUR BRAINS SHAPE AND CONSTRUCT OUR WORLD

The human brain is argued to be the most complex structure in the universe, out-performing even the most advanced computers on certain tasks. How is it possible that such a complex organ is able to construct such seamless and rich perceptions of the world in an efficient manner? As it turns out, it's because the brain does a lot of guess work - and guessing can lead to mistakes. In this lecture, delivered by Millie Preece (Jesus College, Cambridge), we'll explore the evidence that our reality is a product of our expectations, and apply this framework to explain some fascinating phenomena including hallucinations and the placebo effect.

BITS AND PIECES: SECRETS OF A DIGITAL WORLD

Heard about Enigma? Then hear from Dr James Grime about the other German code machine, Lorenz – a machine used for the most important of messages, including those from Adolf Hitler himself. Or hear the story of Hedy Lamarr, the Golden Age Hollywood film star and secret inventor who patented a way to transmit messages without being blocked that we still use in WiFi today. See how messages and photos are transmitted on the internet, and the secret messages that tell a film studio when you are sharing movies illegally. See how are messages transmitted without mistakes, even from space. And we'll prove that you can drill a hole in a CD and it will still play – live!

TUES 23 JAN | Mathematics



TUES 30 JAN | History of Art



MATISSE AND PICASSO: A FIERCE FRIENDSHIP

A lecture on one of the most creative rivalries in 20th century art, delivered by Tom Parsons. Tom currently teaches at St Mary's Ascot, has worked at the Tate and National Gallery and has written books on Post-Impressionism, Rodin and Malevich. He is also founder of the national Art History Documentary Film-making competition, SpOke.



MINERVA PROGRAMME

LENT 2024

TUES 20 FEB | Business

A CAREER IN BUSINESS AND SPORT



Ian Wood-Smith is a partner in a corporate team that advises businesses on buying, selling, financing and general strategy. Ian has advised a great number of entrepreneurs from start up to exit and was also a Director of the mighty Reading FC for over twenty years during which they were twice promoted to the Premier League. He is now a chairman at Huntercombe Golf Club and has many sporting connections. You may have seen Ian around the College as he has been a Governor at the school for nine years.

RESTORATION COMEDY: SATIRE, SEX AND A SIGNIFICANT MOMENT IN ENGLISH THEATRE

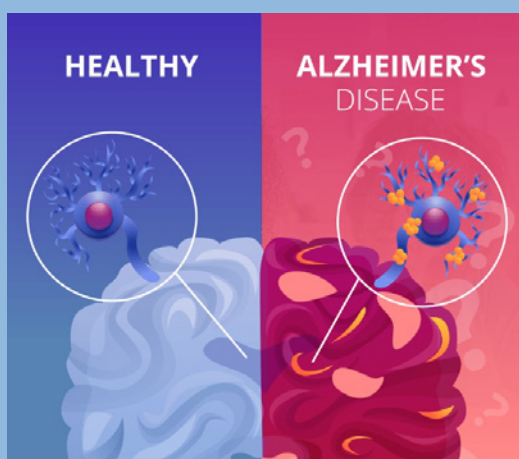
During Oliver Cromwell's rule of England stage performances were banned; when Charles II was restored to the throne, theatre goers were in for a treat. Raunchy, risqué and rebellious, early Restoration comedies were a breath of fresh air. For the first time women acted on stage. Emily Earnshaw discusses how playwrights developed a new style of social comedy in which class, gender relationships, politics and manners were all fair game for their wit.

TUES 27 FEB | English Literature



THUR 29 FEB | Biology

NEUROSCIENCE AND ALZHEIMER'S



How is it that the human brain, the most complex and fascinating organ of all, is so vulnerable to neurodegenerative disorders such as Alzheimer's disease. Alzheimer's is a condition affecting memory and cognitive function, leading to a breakdown of our cognitive reality. In this lecture we will explore the intricate mechanisms at play, unravelling how the gradual accumulation of abnormal proteins and the disruption of neural networks compromise the brain's ability to function at its usual high standard. This lecture will help us gain a deeper scientific understanding of the challenges posed to those affected by Alzheimer's.

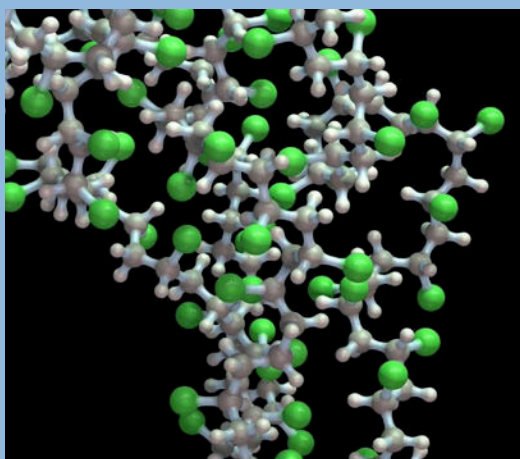


MINERVA PROGRAMME

LENT 2024

THUR 07 MAR | Chemistry

THE AGE OF POLYMERS | DR ADAM BROMLEY



The advancement of human civilization can be tracked in terms of the dominant material used; from our humble beginnings in the 'Stone Age' to what some now regard as the 'Polymer Age'. Why are polymeric materials so useful? How do modern polymer chemists control a seemingly uncontrollable cascade of reactions? And what new and exciting uses might we have for these materials? In this lecture, Dr Bromley discusses the leap from early free-radical reactions to modern controlled radical polymerisation and the exciting places these materials might take us.

IMPORTANCE OF CULTURAL AWARENESS

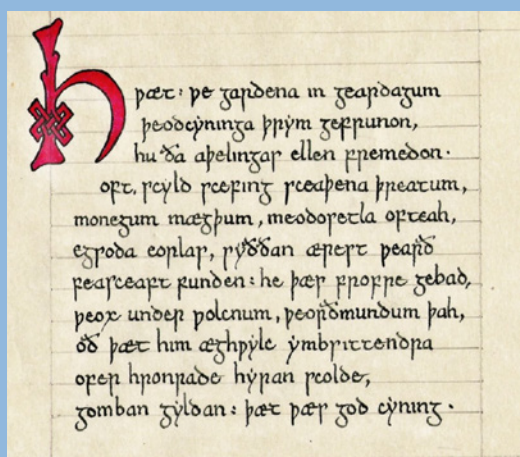
TUES 12 MAR | Languages

Sir Jeremy Blackham KCB MA was an E House pupil at Bradfield from 1957-61. He will talk about how languages have shaped his long and illustrious career in the Navy during which he was Director of the Royal Navy Staff College, Director of Naval Plans at the MoD, Commanding Officer of the aircraft carrier HMS Ark Royal and Chief of Staff at Naval Home Command. He will also discuss the importance of cultural awareness in life through his experiences in the various places he has worked while also providing insight of the benefits of languages in future careers.



THUR 14 MAR | English

BEOWULF AND THE SAGAS: THE NORTHERN EPICS



The Odyssey, *The Iliad*, and *The Aeneid*, three great epics of the classical world, but what about the Barbarian North? Can we discount the literature of Northern Europe and Scandinavia when considering epic literature? James Longmore will discuss the rich culture of literature which developed in Britain and the Viking North and decide whether they can truly call them 'epic'. Hwæt! (Listen!) as he explores tales of gods, heroes, blood-feuds, monsters and perilous journeys recounted by Snori Sturluson and other anonymous sources and follow famous names such as Beowulf, Erik the Red, Siegfried, Thor, and Odin.